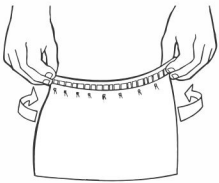


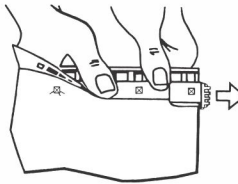


How to close

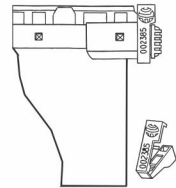
1. Arch the closure to insert the pins



2. Fold the closure and pull the sliding strip to the "close" position.

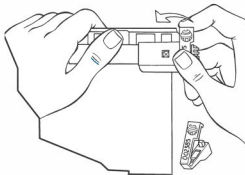


3. Apply a seal at the end of the sliding strip.

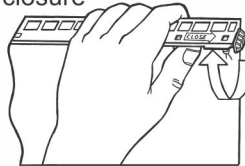


How to open

1. Pull the slide of the seal to break it.



2. Push the sliding strip to "open" position and release the closure



ELC Security Products

USA
☎ (305) 477-2303
e-mail: seals@elcsecurity.com

www.elcsecurity.com

BRAZIL
☎ +55 24 2263-9500 Ext. 2
e-mail: elc@elc.com.br

