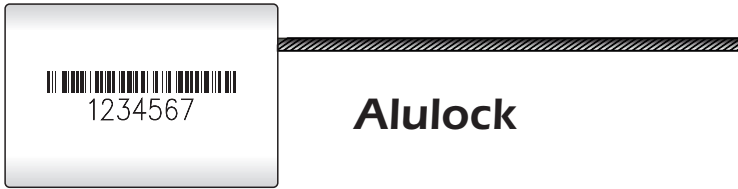




Cable seals



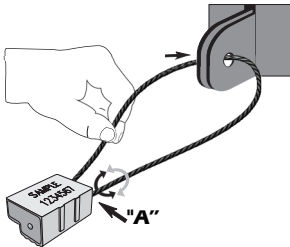
Safelock M



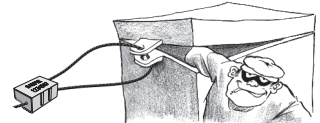
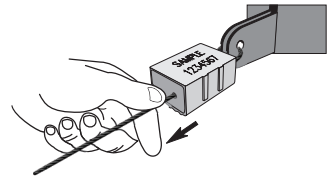
Alulock

How to seal

01 Pass the cable through the compartment you plan to seal and insert it into the capsule A to activate the locking mechanism.

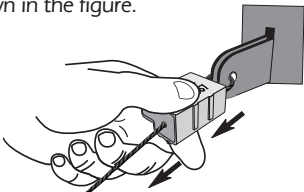


02 Pull the cable tight to the tightest aperture possible.



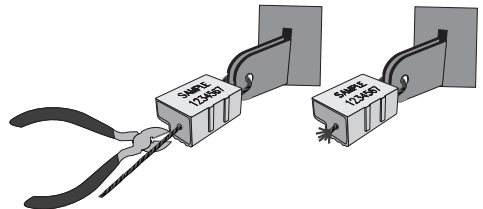
AVOID LOOSE SEALINGS!

03 Confirm the seal is locked by gently pulling as shown in the figure.



If the seal is not locked, replace it.

04 Cut the excess cable right next to the capsule. The cable will fray, making it impossible to be re-inserted.



How to remove

Use a pair of pliers to cut the seal open.

