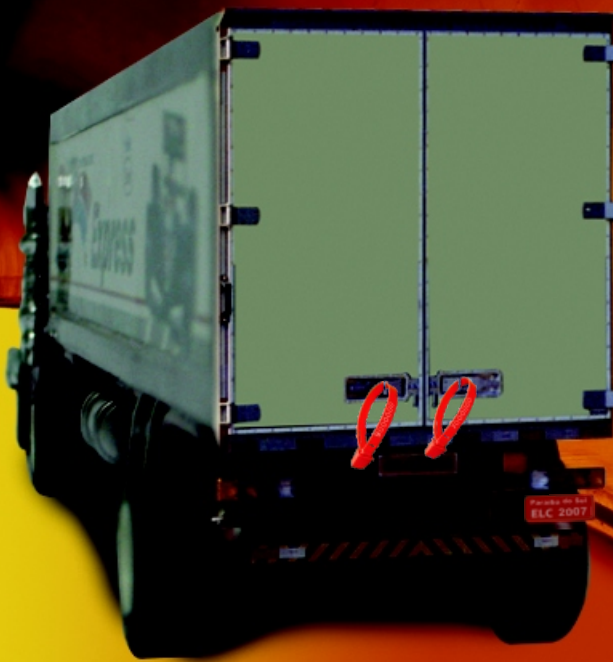


ELC Proudly Presents

Security seals for the transportation industry, from indicative to barrier seals, for the following applications:

- Airlines Carts and Trolleys
- LD Containers
- Doors and Gates
- Drums and Barrels
- Trucks and Trailers
- Hoses and Valves
- Distribution Totes
- Hazardous Materials



Indicative Seals - Adjustable Length



Riplock Seals

The Riplock seals represent the most recent developments in sealing technology, with user friendly removal system.

Features:

- Self-locking Adjustable Length
- Tool-less User-friendly Removal
- Barcode Numbers and Check Digit
- Several Lengths Available



Cliplock Seals

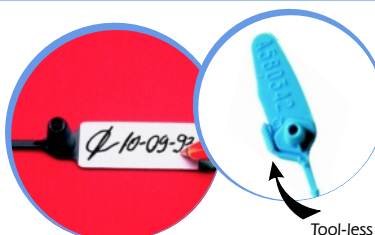
Long, thin, multi-task seal with built-in metallic clip for extra security.

Available in Mat-form of 12 Seals connected together



Features:

- Total Length of 425 mm (16 1/4")
- Self-locking Adjustable Seal
- Quick and Easy Tool-less Removal

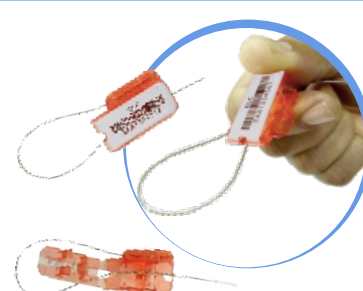


Elokette & Pullock Seals

Easy-to-use seals that combine quick application with high security numeric systems.

Features:

- Versatile, adjustable, strong and easy to use
- Numbers Molded in High Relief, Hot-stamp or in Laser Barcodes
- Nylon Raw Material for Extra Strength



Fastlock Seals

Wire-loop seals with easy-to-use 100% tamper evident polycarbonate locking device.



Features:

- 6" wire lengths (other lengths available)
- See-through locking capsule - easy to detect tampering signs
- Laser-printed barcode numbers

Indicative Seals - Fixed Length

Bandseals

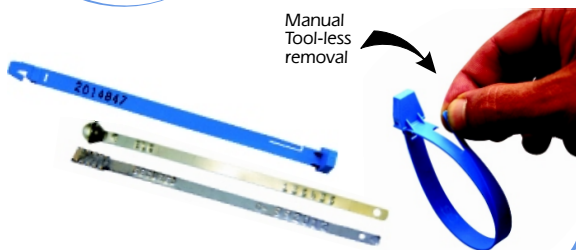
The Fixed-length Bandseals were created for tasks that require strength and security at the same time.

Available in Metal and Plastic, in different numbering systems.



Features:

- High relief molded numbers 100% tamper-proof
- Also available in hot and cold stamp numbering systems



Manual Tool-less removal

Semi-Barrier and Barrier Seals

Semi-Barrier Aluminum Cable Seal

- Body of the seal in aluminum alloy, high resistant to corrosion.
- Exclusive locking mechanism.



Aluminum Cable Seal

Barrier Cable and Bolt Seals

The Bolt and Cable seals are especially designed for applications that demand a great deal of strength. CTPAT compliant seals available.

Features:

- Laser Marked Logo
- Barcode Numbers
- Quick and Easy



Cable and Bolt



United States

Miami - FL
Tel.: 1 (305) 477-2303
Toll-free: 800-37-SEALS (377-3257)
Fax: 1 (305) 477-0186

Brazil

Paraíba do Sul - RJ
Telefax: 55 (24) 2263-9500

Italy

Rome
Tel.: 39 (06) 308-93876
Fax: 39 (06) 308-93877

Company Information:

Name: _____

Address: _____ City: _____ State: _____

Postal Code: _____ Country: _____ Contact Person: _____ Position: _____

Phone: () _____ Fax: () _____ e-mail: _____

Fax Request for Quote to 1.800.94.SEALS (73257)

Model:	Quantity:	Color:	Model:	Quantity:	Color:
<input type="checkbox"/> Riplock	_____	_____	<input type="checkbox"/> Fastlock	_____	_____
<input type="checkbox"/> Clipinlock	_____	_____	<input type="checkbox"/> Bandseal	_____	_____
<input type="checkbox"/> Elckette	_____	_____	<input type="checkbox"/> Aluminum Cable Seal	_____	_____
<input type="checkbox"/> Pullock	_____	_____	<input type="checkbox"/> Cable/Bolt	_____	_____

How to Order:

- Call ELC toll free 1.800.37.SEALS (73257)
- Visit our web site at www.elcsecurity.com or email to seals@elcsecurity.com
- Fill out and send the order form to toll-free Fax 1.800.94.SEALS (73257)

Model:	Quantity:	Color:	Model:	Quantity:	Color:
<input type="checkbox"/> Riplock	_____	_____	<input type="checkbox"/> Fastlock	_____	_____
<input type="checkbox"/> Clipinlock	_____	_____	<input type="checkbox"/> Bandseal	_____	_____
<input type="checkbox"/> Elckette	_____	_____	<input type="checkbox"/> Aluminum Cable Seal	_____	_____
<input type="checkbox"/> Pullock	_____	_____	<input type="checkbox"/> Cable/Bolt	_____	_____

ELC will prepay and add UPS Ground Freight (FOB: Miami, FL). Sales Taxes may apply to Ship-to Florida Locations.

Signature: _____ Date: ____/____/____