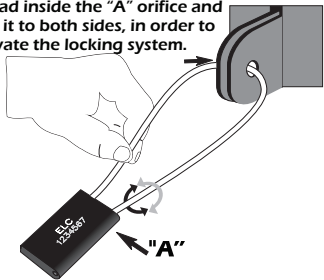


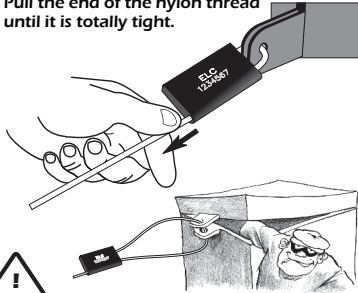
# Aluminum Lite Seal

## To close

- 01** Pass the nylon sealing thread through the object to be sealed, and insert the end of the thread inside the "A" orifice and spin it to both sides, in order to activate the locking system.



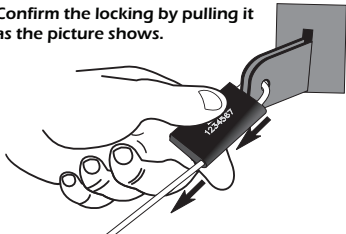
- 02** Pull the end of the nylon thread until it is totally tight.



Attention!

Please, avoid loose closures.

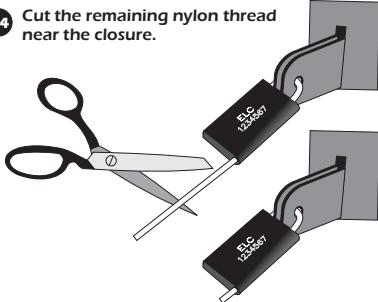
- 03** Confirm the locking by pulling it as the picture shows.



Attention!

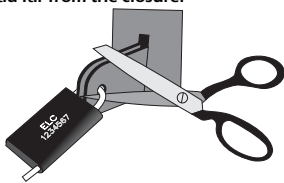
If it does not lock, please, replace the seal.

- 04** Cut the remaining nylon thread near the closure.



## To open

Use the scissors to remove it, cutting the nylon thread far from the closure.



## Protocol of Sealing Disposal

Please, keep the seal until the end of the checking. Losing a seal will make the person responsible for checking guilty in case of irregularity. If any irregularities are reported, please, call the police. If it is possible, the sealed object should accompany the seal used. If there are no irregularities, the used seal should be destroyed.



### Important Information

If requested, ELC is able to provide technical assistance to substantiate the work of official public experts.

ELC is not responsible for the incorrect use of this product.



Attention!

The closure without observing the rules will make the operator responsible for further occurrences.